

# THE PARKSIDE

3 BEDROOMS • 2.5 BATHROOMS • GARAGE



ELEVATION A FRONT

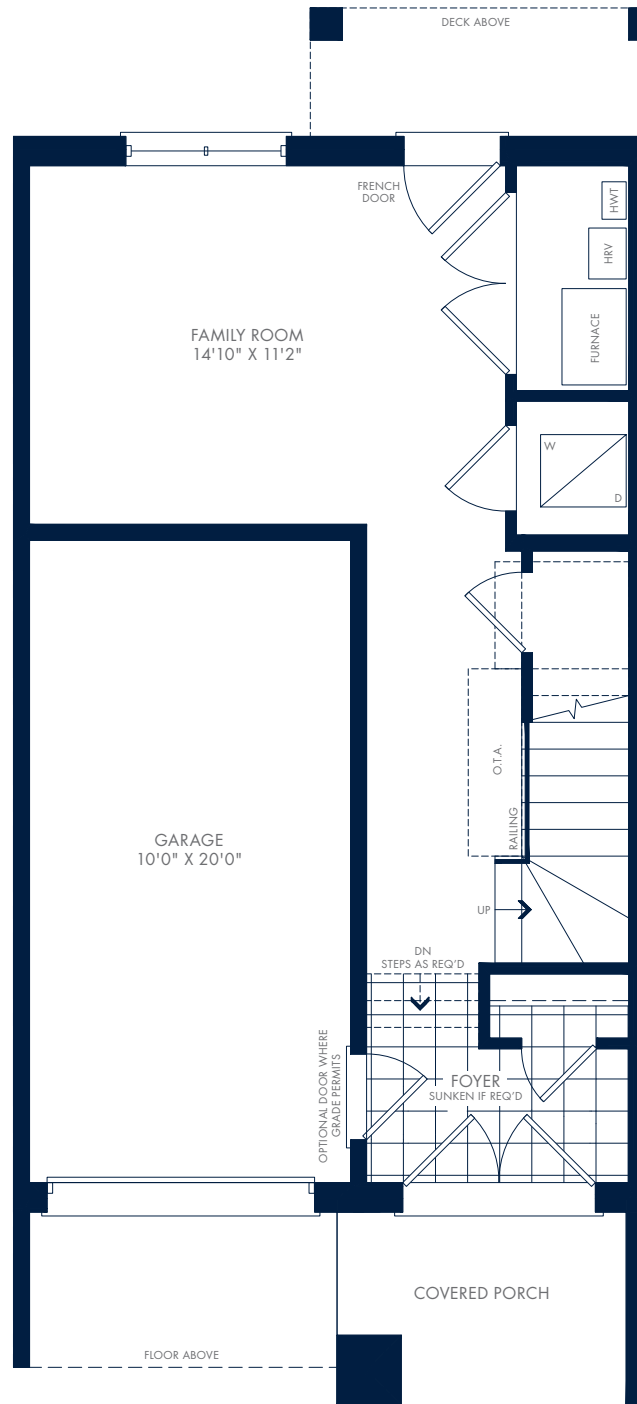
2,052 SQ.FT. INCLUDES 61 SQ.FT. O.T.B.

# THE PARKSIDE

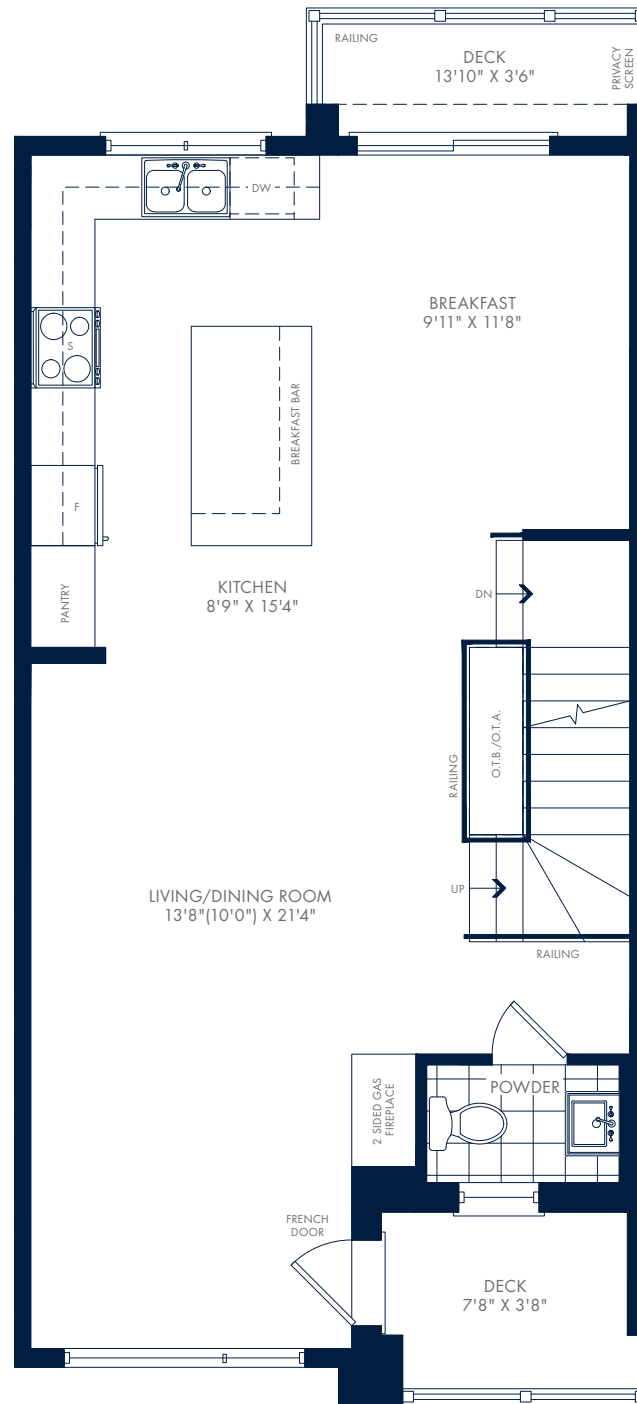
3 BEDROOMS • 2.5 BATHROOMS • GARAGE

## GROUND FLOOR – ELEVATION A

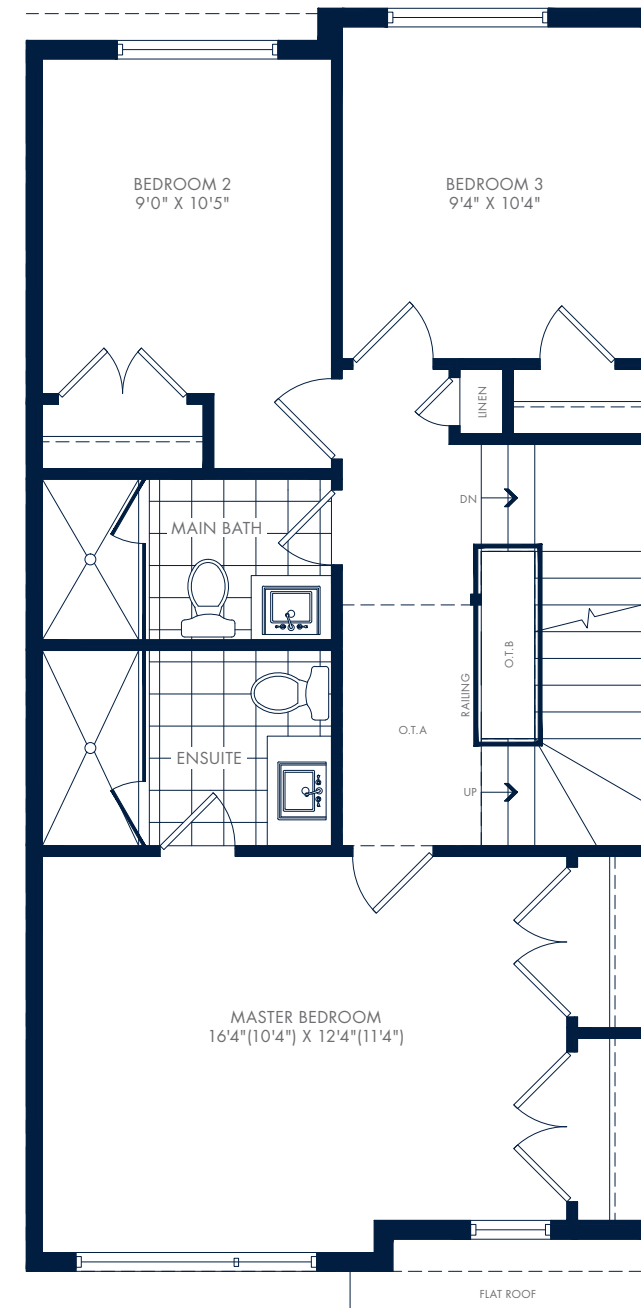
2,052 SQ.FT. INCLUDES 61 SQ.FT. O.T.B.



## SECOND FLOOR – ELEVATION A

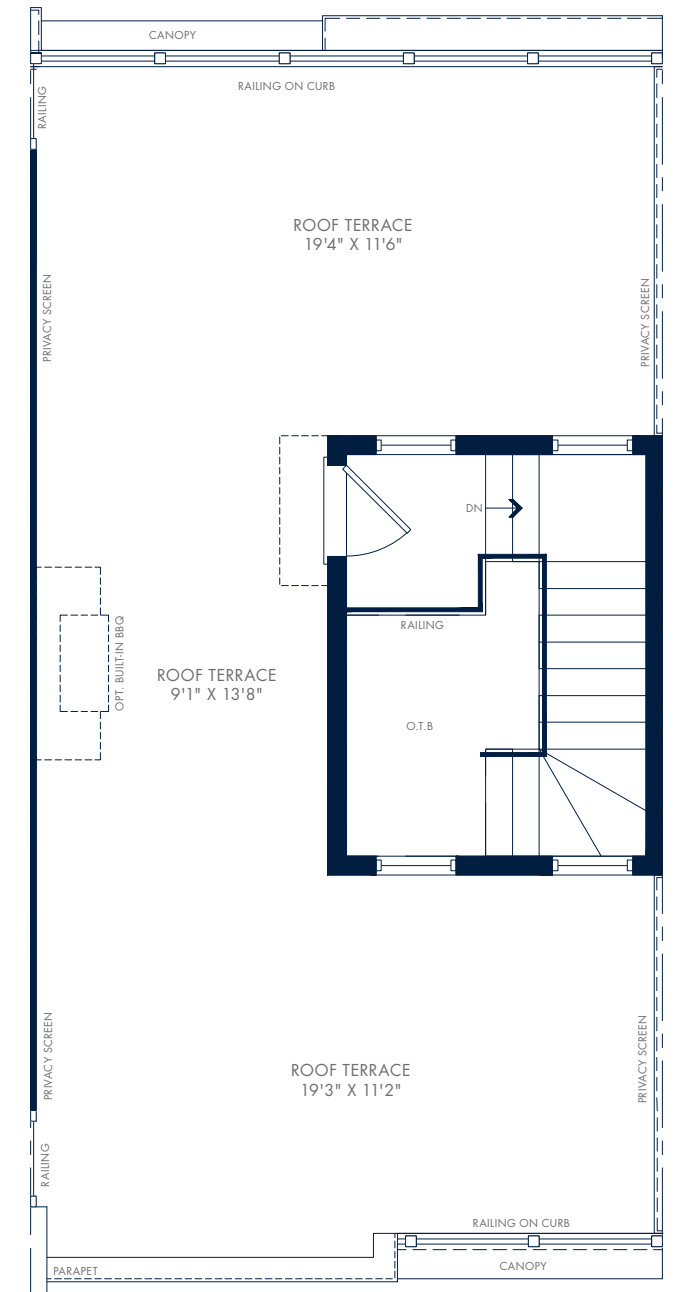


## THIRD FLOOR – ELEVATION A



## TERRACE – ELEVATION A

OPEN ROOFTOP 569 SQ.FT.  
(NOT INCLUDED IN TOTAL)



SUMMERSIDE TOWNS  
OAK BAY