

THE PALMER

3 OR 4 BEDROOMS • 3 BATHROOMS • DOUBLE CAR GARAGE

ELEVATION C
2,000 SQ.FT.



ELEVATION A
1,995 SQ.FT.



ELEVATION B
2,012 SQ.FT.

BAYSIDE 11 ESTATES

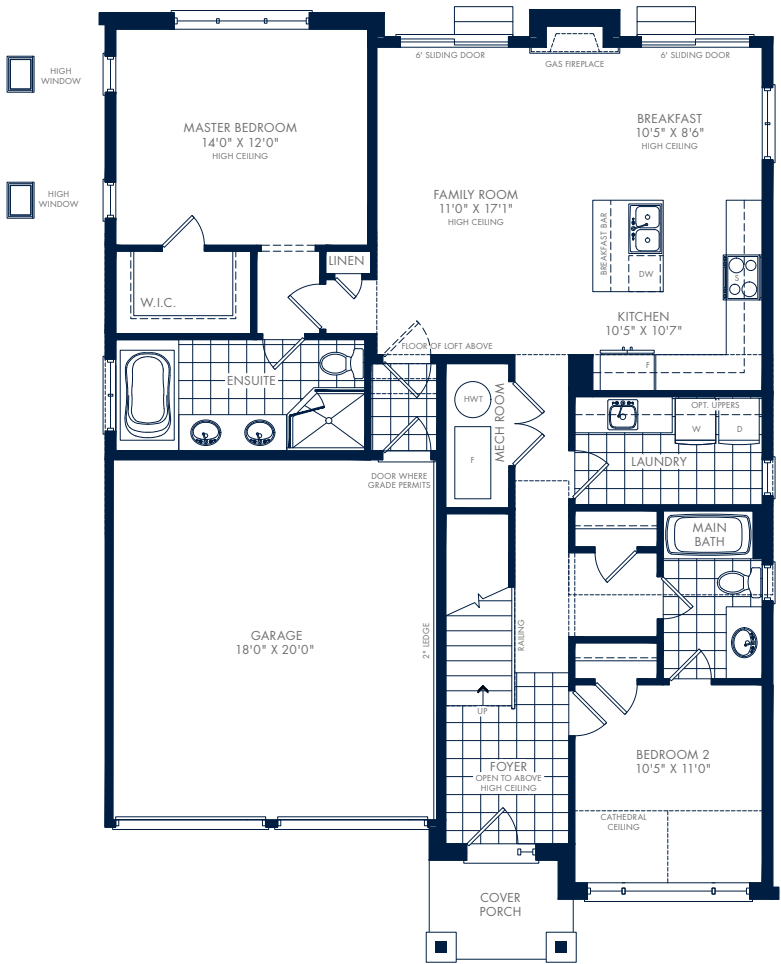
WATERSIDE ESTATES

THE PALMER

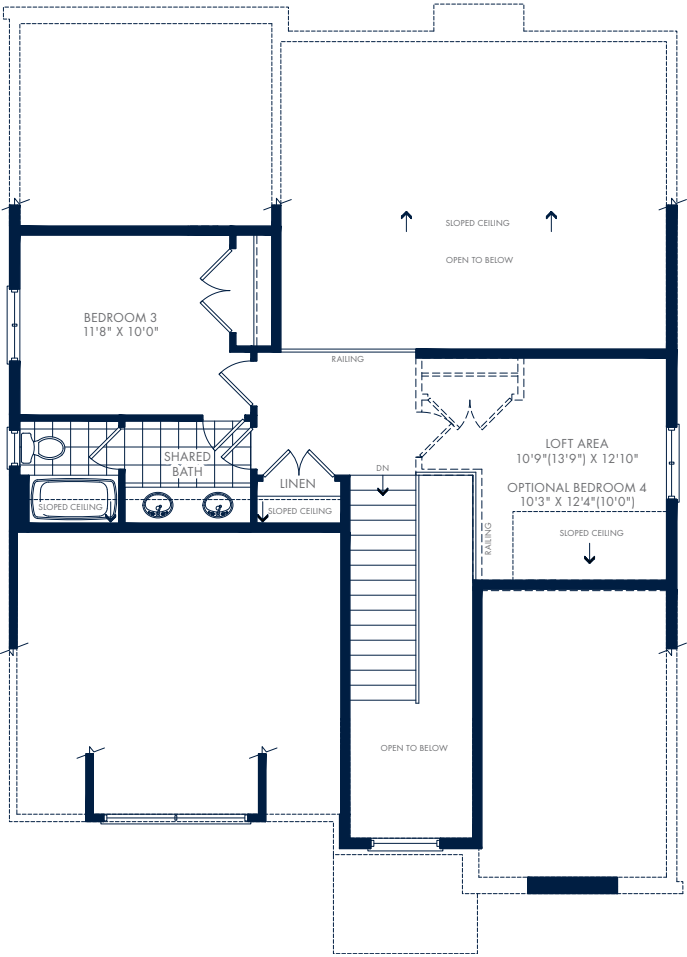
3 OR 4 BEDROOMS • 3 BATHROOMS • DOUBLE CAR GARAGE

GROUND FLOOR – ELEVATION A

1,995 SQ.FT.

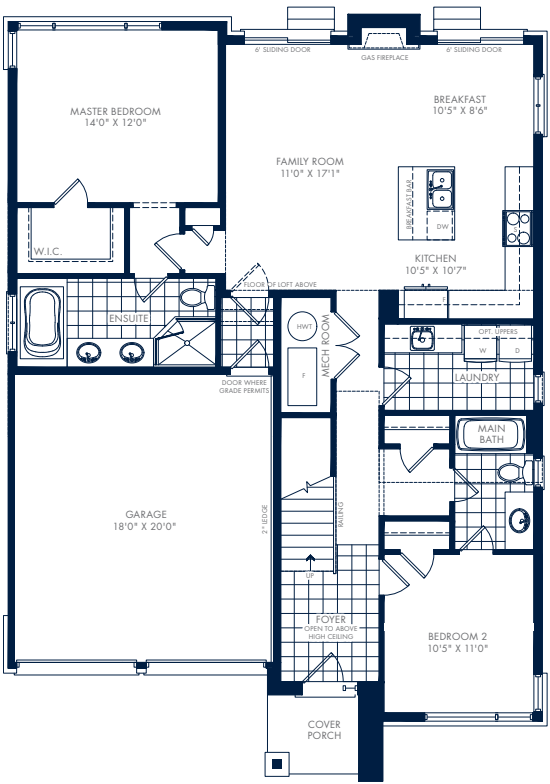


LOFT – ELEVATION A

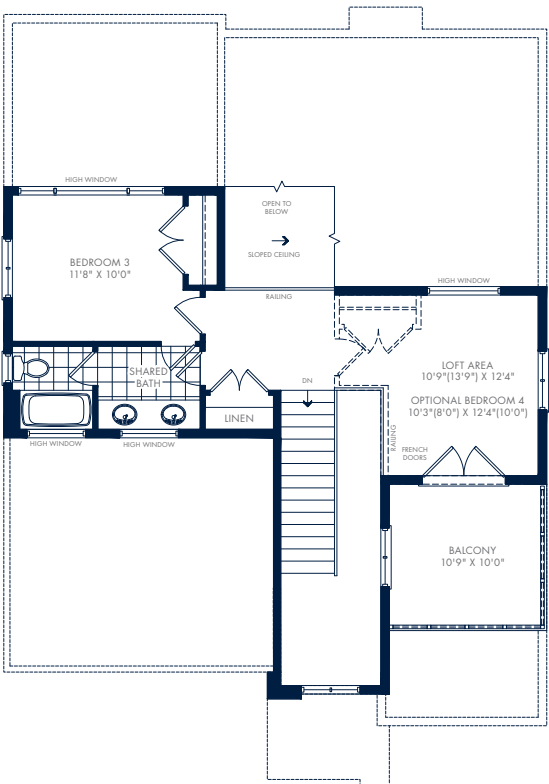


GROUND FLOOR – ELEVATION B

2,012 SQ.FT.

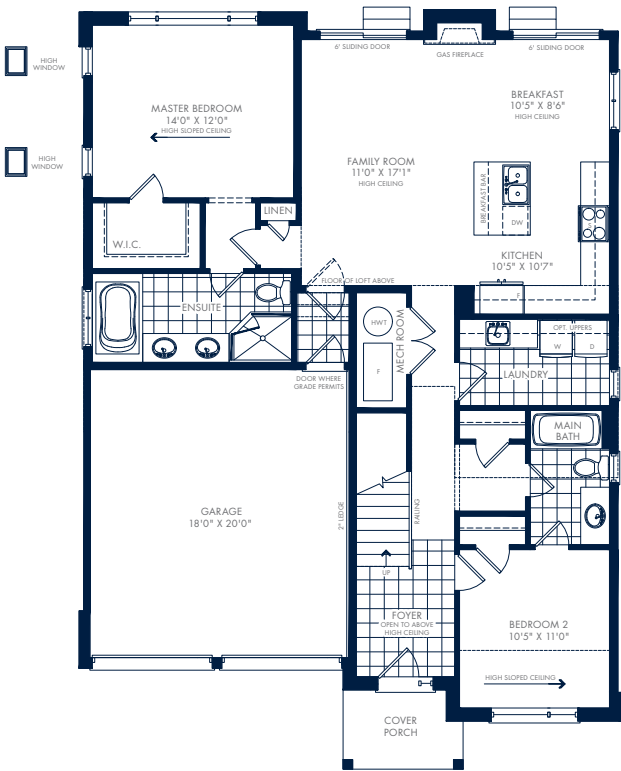


LOFT – ELEVATION B

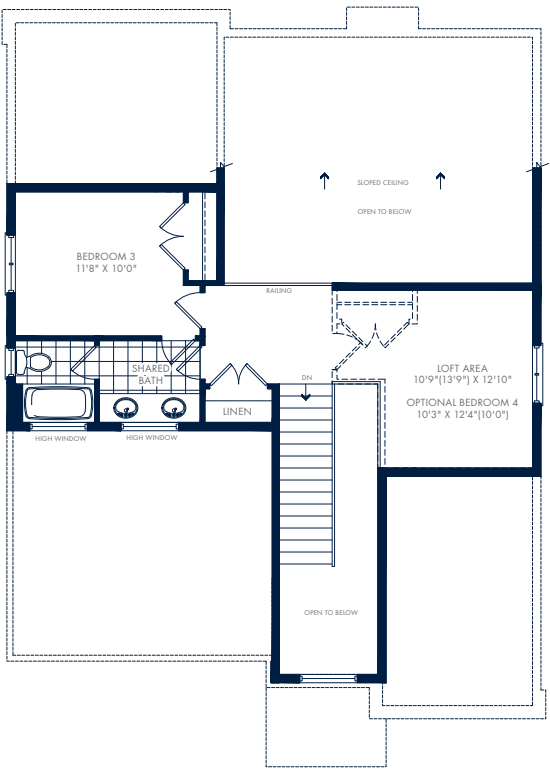


GROUND FLOOR – ELEVATION C

2,000 SQ.FT.



LOFT – ELEVATION C



BAYSIDE 11 ESTATES

WATERSIDE ESTATES

OAK BAY