

THE PALMER

3 OR 4 BEDROOMS • 3 BATHROOMS • DOUBLE CAR GARAGE

ELEVATION C
2,000 SQ.FT.



BAYSIDE 11 ESTATES

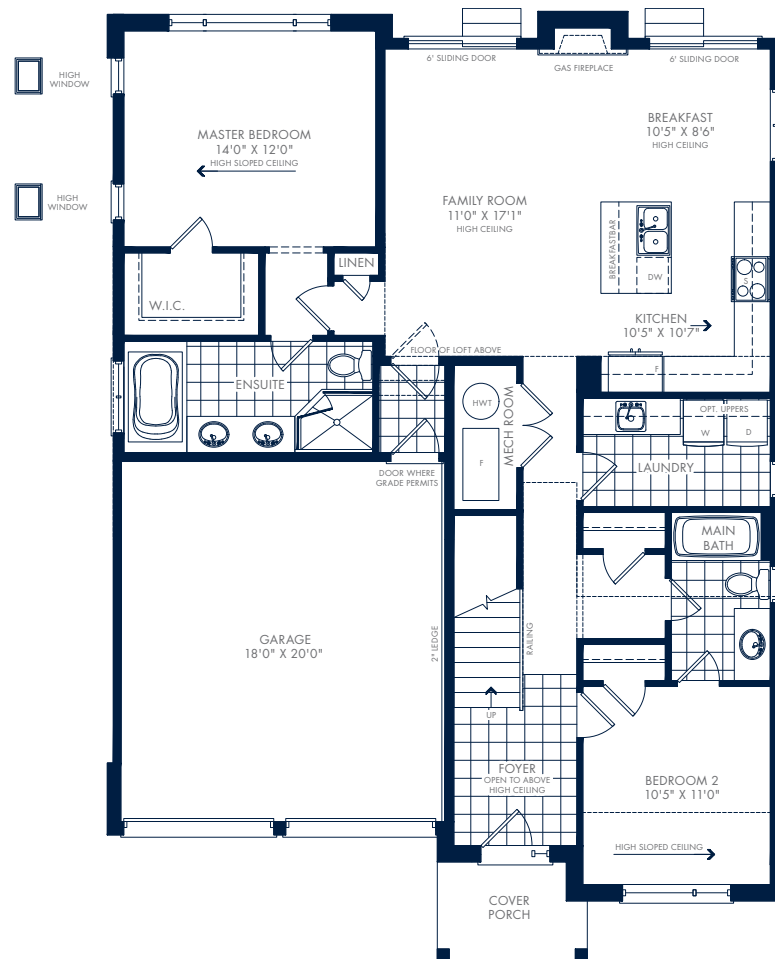
WATERSIDE ESTATES

THE PALMER

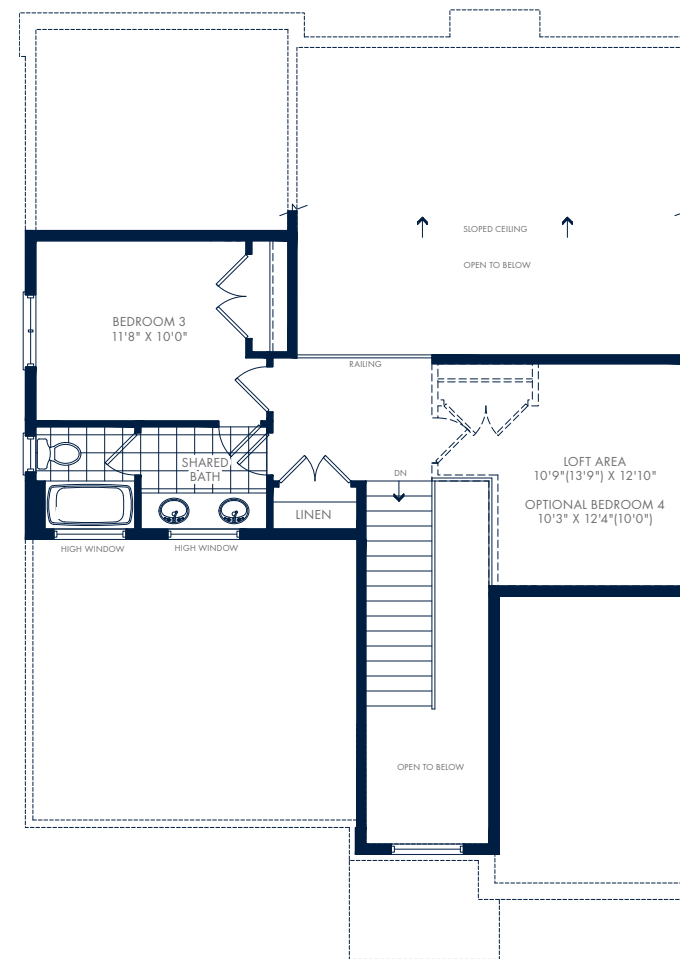
3 OR 4 BEDROOMS • 3 BATHROOMS • DOUBLE CAR GARAGE

GROUND FLOOR – ELEVATION C

2,012 SQ.FT.



LOFT – ELEVATION C



OAK BAY